







COMPANY PROFILE

 +91 9909915974 |

 www.adventblowtech.com

 info@adventblowtech.com

 Plot No. 72,73 FF Yogi Estate-2, Jitali, GIDC, Ankleshwar - 393001.



ABOUT US

Since 2016, we have been manufacturing high-quality PET bottles and jars in Ankleshwar, Gujarat, India, serving industries like food, beverages, pharmaceuticals, and cosmetics. Our products are lightweight, durable, and cost-effective, ensuring excellent packaging solutions for various businesses.

We also specialize in developing custom molds and dies tailored to specific customer requirements. Our expert design team creates unique shapes, sizes, and volumes, ensuring precision and innovation. Using advanced technology, we deliver consistent, high-quality, and customized packaging solutions that enhance brand identity.



We understand the importance of timely delivery in the packaging industry. Our efficient production process, backed by advanced machinery, ensures smooth manufacturing. With a strong logistics network, we fulfill orders promptly without compromising quality.

Customer satisfaction remains our priority, and we strive to exceed expectations through product excellence, competitive pricing, and service. By understanding clients' needs and providing reliable packaging solutions, we aim to build long-term relationships and establish ourselves as a trusted name in the industry.

VISION

A world where every liquid—whether healing, nourishing, refreshing, protecting, cleansing, or sustaining—flows in packaging that's as responsible as it is reliable.

MISSION

To engineer the future of sustainable packaging—delivering precision, safety, and innovation in every bottle, for every need

WHAT WE OFFER!

- Shampoo PET Bottles
- Agro PET Bottles
- Hair Oil PET Bottles
- Tablet Containers
- Sauce PET Bottles
- Juice Bottles
- Lubricant Bottles
- Soft Drinks and Beverages
- Cosmetic Products
- Household Products



EVERYDAY ESSENTIALS

HOUSEHOLD PRODUCTS

Our versatile PET bottles in sizes ranging from 450ml to 1 liter are perfect for packaging a variety of household cleaning liquids such as surface cleaners and disinfectants. They ensure safe storage, easy pouring, and durability, making them an excellent choice for everyday home care products.



Volume : 450 ml



Volume : 500 ml



Volume : 500 ml



Volume : 900ml



Volume : 1 ltr



Volume : 1 ltr

DISH WASH - SMALL

Our compact PET bottles in 250ml, 500ml, and 1-liter sizes are designed for everyday dishwashing liquids. Lightweight and easy to handle, they are perfect for small families and retail packaging, providing convenient, portable, and cost-effective solutions for daily household cleaning needs, with enhanced grip and durability for long-term use.



Volume : 250 to 1 ltr

DISH WASH - LARGE

These 4.5L and 5L PET bottles are perfect for bulk dishwashing liquid packaging, offering durable, cost-effective solutions for commercial kitchens, large households, and institutions.



Volume : 4.5 ltr



Volume : 4.5 ltr



Volume : 5 ltr

AGROCHEMICALS

Durable 100ml to 1L PET Agrochemical Bottles – ideal for pesticides, herbicides & fertilizers. Leak-proof, lightweight, and farmer-friendly for safe, easy use and transport.



Volume : 100 ml to 1 ltr



Volume : 100 ml to 1 ltr

WELLNESS ESSENTIALS

Our 2.5L to 4.5L PET Wellness Essentials bottles offer safe, durable, and hygienic packaging for liquid medicines and syrups, ensuring airtight storage and easy dispensing for medical use.



Volume : 2.5 ltr



Volume : 3 ltr



Volume : 4.5 ltr

REFILL-READY PET

ADDABLE OIL REFILLING

Our refill solution PET bottles are available in a range of sizes—350ml, 380ml, 400ml, 500ml, 800ml, and 1 liter—suitable for a variety of refillable liquid products. These bottles are ideal for hand wash, shampoos, surface cleaners, and also for addable oil refilling used in cooking or machinery. Designed for strength and convenience, they offer leak-proof storage, easy handling, and support sustainable practices by encouraging reusability and reduced packaging waste.



Volume : 400 ml, 500ml & 1ltr



Volume : 250 ml & 700 ml



Volume : 500 ml



Volume : 500 ml & 1 ltr



Volume : 1 ltr



Volume : 165 ml



Volume : 350 ml



Volume : 380 ml



We offer customizable bottle designs solutions tailored to align with your brand identity and packaging requirements.

BEVERAGES PACKAGING

MILK PRODUCTS

Safe and hygienic bottles suitable for dairy-based beverages like flavored milk, buttermilk, and nutritional drinks.



Volume : 180 ml



Volume : 200 ml



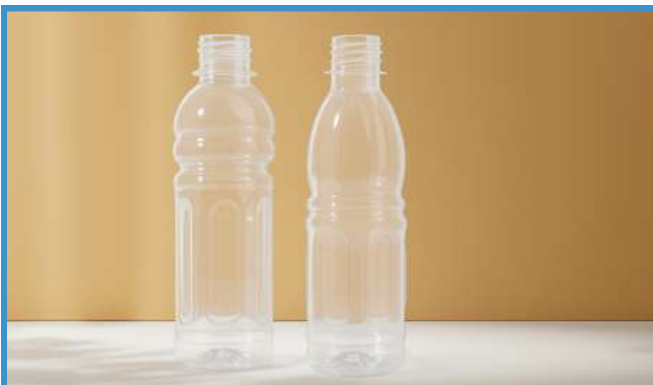
Volume : 1 ltr

SOFT DRINKS

Lightweight and user-friendly bottles perfect for juices, flavored sodas, and ready-to-drink beverages.



Volume : 100 ml



Volume : 200 ml

CARBONATED COLD DRINKS

Designed to withstand internal pressure, these bottles maintain carbonation and freshness, ideal for fizzy and aerated beverages, ensuring quality, safety, and extended shelf life.



Volume : 200 ml to 600 ml

We craft innovative bottle design solutions customized to reflect your brand and meet your unique packaging needs.

NON CARBONATED COLD DRINK

Suitable for lightly carbonated beverages, offering secure sealing and clear visibility for enhanced shelf appeal, these bottles are lightweight, durable, and designed to prevent leakage and pressure loss during storage and transport.



Volume : 250 ml



Volume : 250 ml



Volume : 250 ml



Volume : 220 ml



Volume : 250 ml



Volume : 250 ml

WATERBOTTEL



Volume : 500 ml



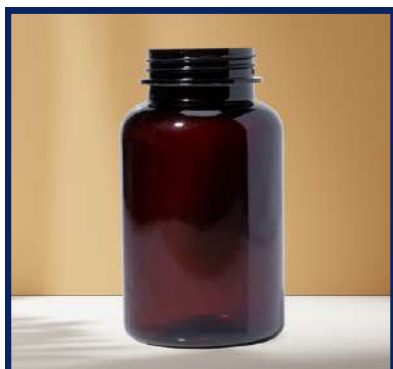
Volume : 1 ltr

Durable and crystal-clear PET bottles ideal for purified and mineral water, ensuring safety and everyday convenience. Designed for easy handling, leak-proof performance, and long-lasting clarity, they are perfect for both retail and on-the-go use. Their lightweight structure and recyclable material support sustainable, eco-friendly packaging.



Advent Blowtech – Precision in Every Bottle, Excellence in Every Mold!

MED STORAGE



Volume : 150 ml



Volume : 200 ml

Our 150ml and 500ml PET bottles are specifically designed for medical and pharmaceutical storage. Ideal for syrups, tonics, liquid medications, and disinfectants, these bottles offer excellent chemical resistance, leak-proof sealing, and long-lasting clarity. Lightweight and shatter-resistant, they are suitable for both clinical use and retail distribution, ensuring safety, hygiene, and compliance.

FLAVOR ESSENTIALS

Our 350ml and 4500ml PET containers are ideal for storing and packaging syrups, sauces, pickles, and bulk food ingredients. These bottles offer strong durability, secure sealing, and food-grade safety—perfect for both retail and commercial use. Customizable shapes, sizes, and labeling options are available to suit your brand needs. Their clarity and sturdy build enhance shelf presence and product protection.



Volume : 350 ml



Volume : 4.5 ltr

SHARBAT - JAM

PET bottles designed for sharbats, jams, and syrups. They offer secure sealing, food-grade safety, and clear visibility—ideal for retail and everyday use.



Volume : 300 ml



Volume : 700 ml



Volume : 500 ml



Volume : 500 ml

PICKELS AND POWDER STORAGE

Our Flavor Essentials bottles in 250gm to 5kg sizes are ideal for storing and packaging pickles, spices, powdered ingredients, and dry food items. Designed to preserve freshness and aroma, these PET containers offer airtight sealing, high clarity, and strong durability. Their compact design makes them suitable for both household kitchens and retail shelves, ensuring product safety and visual appeal.



Volume : 500 ml



Volume : 250 ml

BEAUTY & CARE

COSMETIC BOTTLE

Available in various compact sizes, these bottles are ideal for packaging creams, lotions, oils, serums, and travel-size cosmetics. Their sleek design and portability make them perfect for everyday use, travel kits, promotional packs, and on-the-go applications. These bottles offer a professional appearance, easy handling, and can be customized to reflect your brand's identity.



Volume : 100 ml



Volume : 200 ml



Volume : 500 ml



Volume : 500 ml



Volume : 1 ltr



Volume : 1 ltr

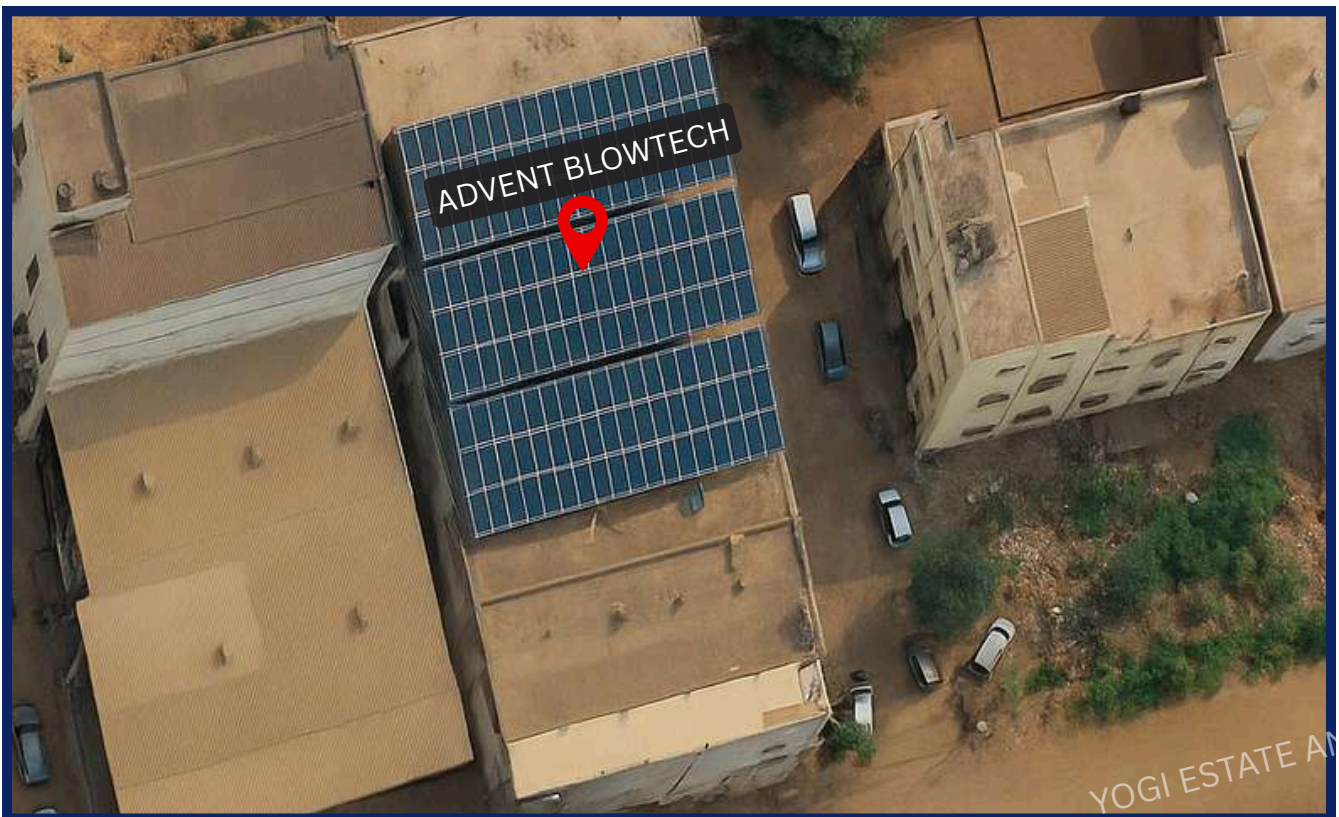
WHY CHOOSE US?

With over 8 years of experience, we specialize in manufacturing high-quality PET bottles and jars for a wide range of industries, including food, beverages, pharmaceuticals, and cosmetics. Our expert team offers customized solutions with unique shapes, sizes, and volumes, supported by in-house mold and die development to ensure precision and innovation.

An ISO 9001:2015 certified company with 8+ years of experience, we deliver high-quality, custom PET bottles and jars—backed by in-house mold development, advanced technology, and a commitment to precision, innovation, and on-time delivery.



OUR SUSTAINABILITY STRATEGY



At Advent Blowtech, we believe that responsible manufacturing goes hand-in-hand with environmental stewardship. As part of our ongoing commitment to sustainability, we have implemented several green initiatives, with a focus on clean energy and eco-conscious operations. Here are the four key pillars of our strategy:

- 1. Solar-Powered Facility** : Our plant runs on solar energy, reducing reliance on conventional power sources.
- 2. Lower Carbon Emissions** : We cut greenhouse gas emissions by using clean, renewable energy in our operations.
- 3. Energy Efficiency** : Solar power enhances energy efficiency and helps reduce operational costs.



CONTACT US

Advent Blowtech specializes in the manufacturing of PET bottles and jars for various industries. Our expertise extends to the development of custom molds and dies to accommodate specific customer demands.

Your packaging partner for success

-  +91 9909915974
-  www.adventblowtech.com
-  info@adventblowtech.com
-  Plot No. 72,73 FF - Yogi Estate-2, Jitali, GIDC, Ankleshwar - 393001.



FOR MORE INFO